

Date : 9/9/2016

# Sewer Asset Plot

## 4 DUBBO STREET ALBION 3020

\* Original Pipe Size to be used for design purposes



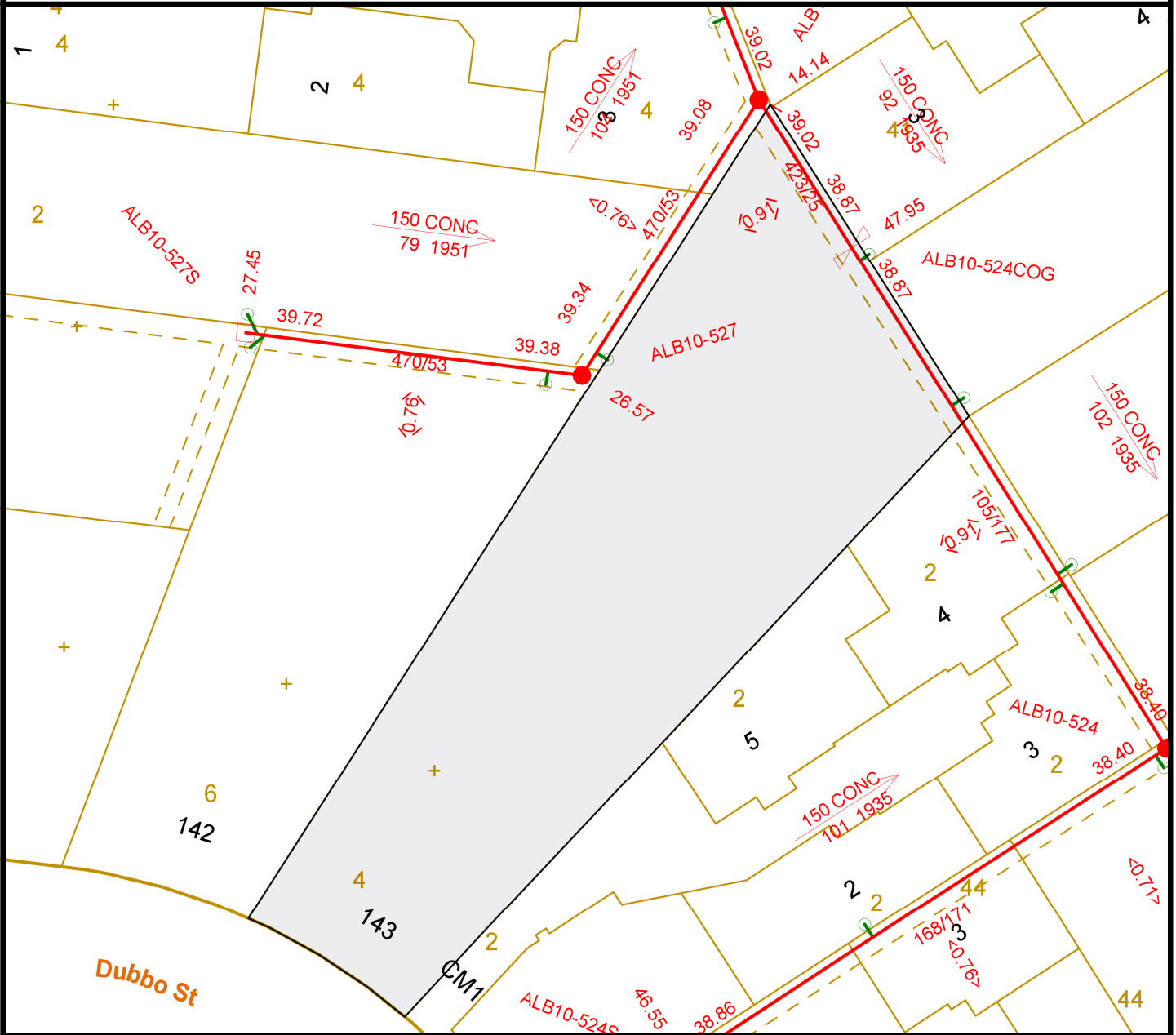
City West Water

### Sewer Details

Pipe Offset from : **NORTH-WEST** Boundary : **0.78** m Approx .  
 Depth to Pipe Invert : **2.55** Pipe Size\* : **150** mm



Scale: 1:500



### LEGEND

<ul style="list-style-type: none"> <li> Access Shaft</li> <li> Circular Manhole</li> <li> Gas Check Manhole</li> <li> Square Manhole</li> <li> Rectangular Manhole</li> <li> Chambered Manhole</li> </ul>	<ul style="list-style-type: none"> <li> Inspection Shaft</li> <li> End of Pipe</li> <li> Long Branch Reducer</li> <li> Circular Pump Well</li> <li> Pipe Junction</li> <li> Ventilation Structure</li> </ul>	<ul style="list-style-type: none"> <li> Sewer Main</li> <li> Abandoned Sewer Main</li> <li> Direction of Flow</li> <li> Change of Grade</li> </ul>
---	--	--

**Assets labelled AC may contain asbestos material and therefore works on these assets must be undertaken in accordance with OHS Regulations 2007 ( Part 4.3 ).**

Disclaimer : The location of assets must be proved in the field by the applicant prior to the commencement of work. These plans do not indicate private services. City West Water Corporation does not guarantee and makes no representation or warranty as to the accuracy or scale of this plan. This company accepts no liability for any loss, damage or injury by any person as a result of any inaccuracy in this plan.