

# HUNTER HOMES

live WITH HEART 

LOT 216, Proposed Road  
MAITLAND, NSW

Land 692m<sup>2</sup>

**\$780,655\***

## BOWMAN ALT FACADE

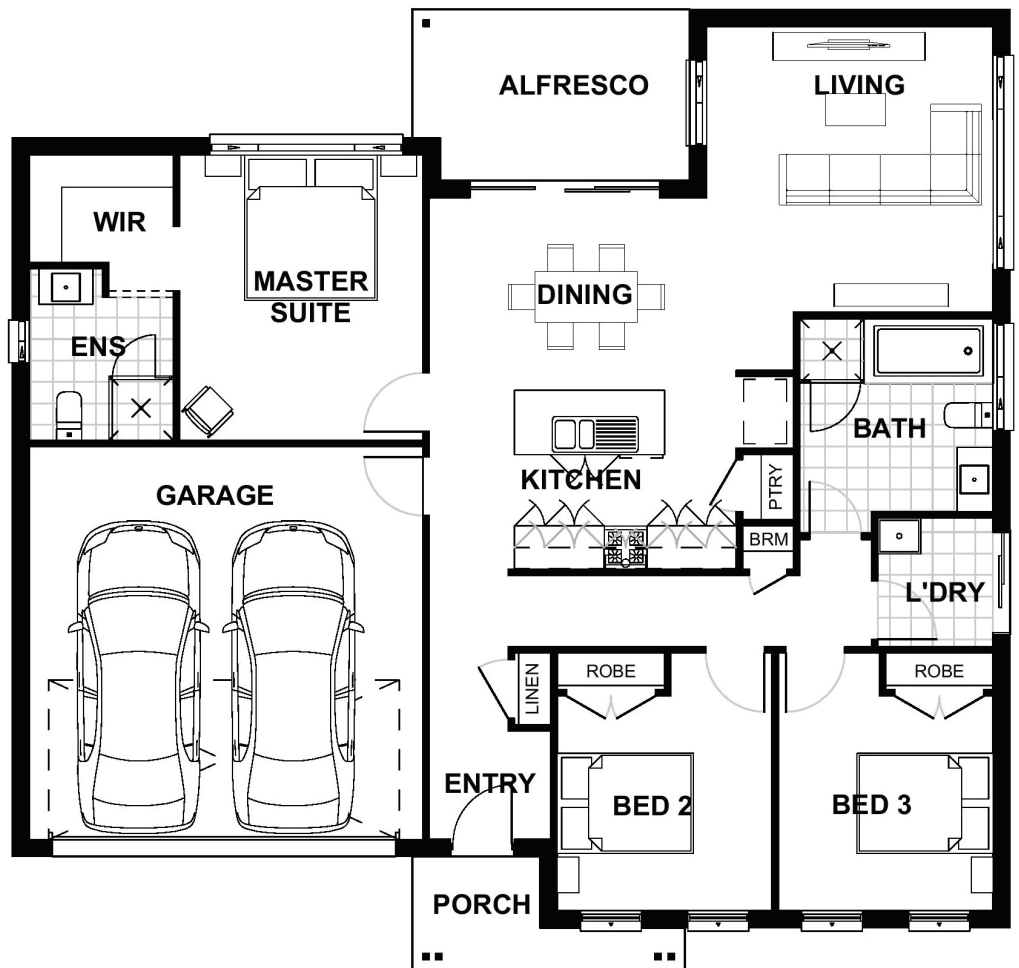


Total (sq.s.)	17.86	Width (m)	13.95
Total (m <sup>2</sup> )	165.9	Length (m)	13.45

Contact Jackie Wasley  
0400 623 852 jackie@hunterhomesnsw.com

### Features & Inclusions

- ✓ Experience the Difference
- ✓ 2590mm High Ceilings
- ✓ Carpet & Tiles Throughout
- ✓ 11.5KW Fujitsu A/C System
- ✓ 45m<sup>2</sup> Concrete Driveway
- ✓ 2.7KW Solar System
- ✓ 3 Coat Paint System
- ✓ Fisher & Paykel Freestanding Oven, Fridge, Microwave
- ✓ Fisher & Paykel Washer and Dryer
- ✓ 20mm Stone Benchtops
- ✓ Flyscreens to all Windows
- ✓ 35 LED Downlights
- ✓ Freestanding Bath
- ✓ And MUCH more!



**Terms and Conditions:** Images shown on this brochure are approximate and for illustration purposes only, these plans may not be drawn to scale. Façades and other images on this brochure may be shown as optional upgrades or not included, additional fixtures and finishes that are featured on this document may not be included in the base cost such as landscaping, tiling, decking, furniture, feature lighting, pools, driveways etc. Land estate pricing is subject to the developers guidelines. Hunter Homes reserves the right to change plans and inclusions at any time. This package is subject to council approval. All designs that are developed remain the property of Hunter Homes Pty Ltd under copyright law & we retain & claim all rights to these plans. Changing plans by 50% or more does not avoid legal responsibility for a copyright breach.

See our website for Display locations  
**1300 BUY HOME** [www.hunterhomesnsw.com](http://www.hunterhomesnsw.com)



House and Land - Maitland 166