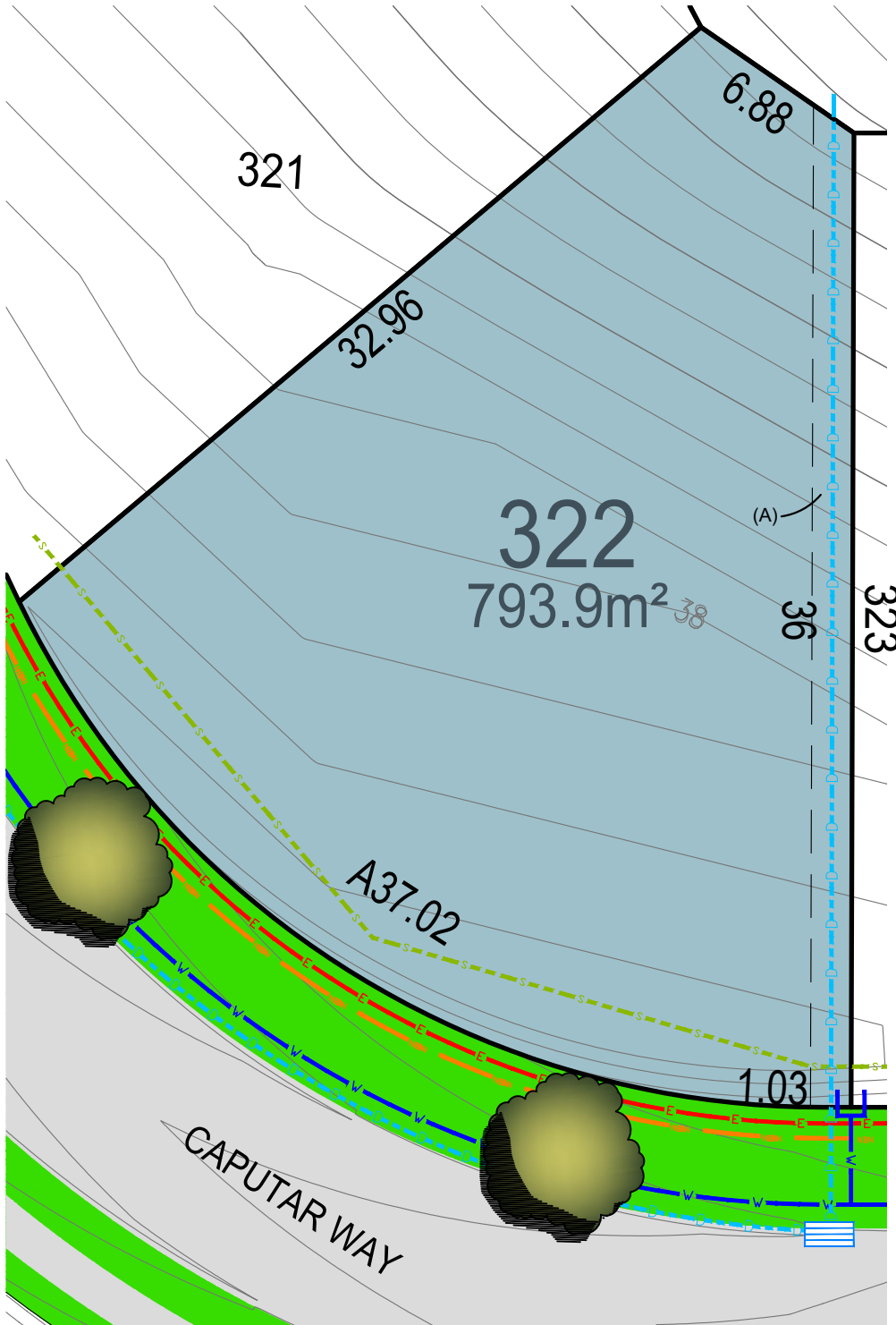


STAGE 3 - LOT 322 CAPUTAR WAY, LOCHINVAR



(A) - EASEMENT TO DRAIN WATER 1.5 WIDE



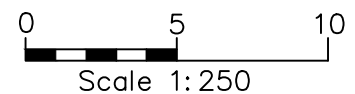
Location plan



REVISION A 17/12/2021

Legend

- NBN COMMS CABLE
- E ELECTRICITY CABLE
- - - S SEWER MAIN
- SEWER ACCESS CHAMBER
- - - D STORMWATER/DRAINAGE
- STORMWATER/DRAINAGE PIT
- W WATER MAIN



CONTOUR INTERVAL: 0.1m

Disclaimer: This document has been prepared for Christopher Road Pty Ltd. All dimensions, areas & easements are subject to final survey endorsement by Council and the registration of the final plan. Please note that every reasonable effort has been made to ensure that the information in this preliminary plan is accurate. Any interested parties should make their own enquiries, seek expert advice and review the contract terms. Indicative service and tree location only. October 2020